



TRS 3pt Lap and Diagonal Safety Harness

INSTRUCTIONS FOR INSTALLATION AND USE

These Instructions comply with the requirements of ECE 16.08 regarding the installation and use of harnesses on public roads in Europe.

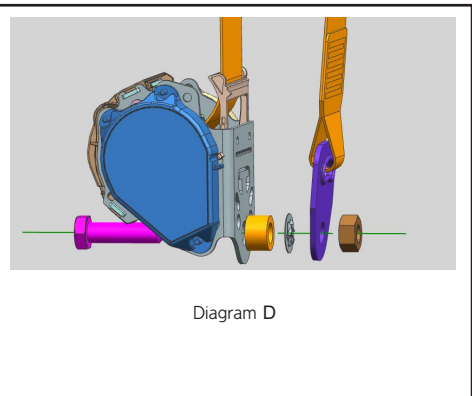
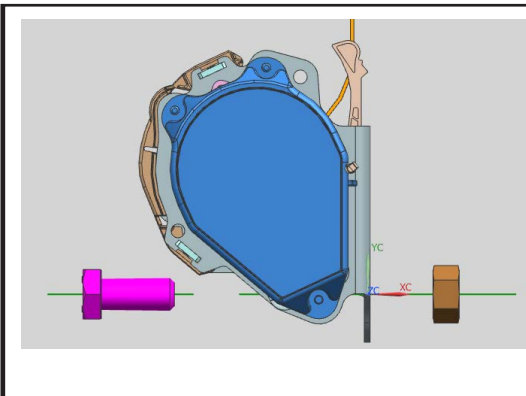
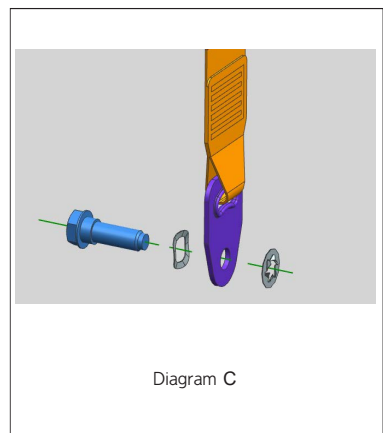
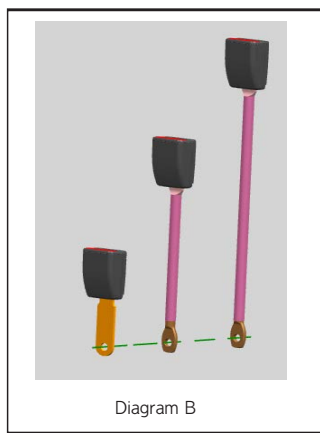
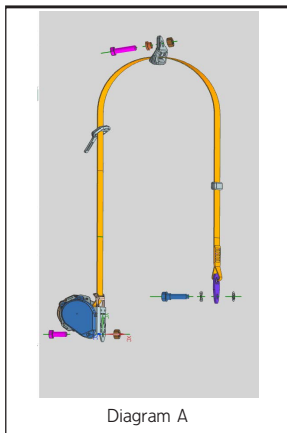
INSTALLATION

This harness is suitable for universal fitment to the front seat of most standard classic saloon cars.

The mounting bolts supplied should be securely screwed into the seat belt mounting points provided by the manufacturer of the car. The lap strap should utilise the mounting points normally used for the front seat lap strap. The shoulder strap/straps should utilise the rear seat lap strap mounting point/points which are most directly behind the front seat - see diagrams below.

Install harness as shown in the diagrams A, B and C below. If in doubt, contact supplying dealer or Manufacturer.

All mounting points must be capable of withstanding a minimum load of 3500lbs/1600kg. Ensure anchorages are tight in their mountings and in line with the direction of load. Use packing washers if necessary - see diagram D.



USE

This harness is intended for the use of one adult front seat passenger. The harness is not handed, and can be used either on either driver or passenger side.

It should not be used by children and must never be worn around a child seated on the occupants lap.

To fasten the harness, insert the metal tongue into the slot in the release buckle until an audible click is heard. To release, push the RED button.

SEAT BELT USE

Lap and diagonal belts provide more protection and should be used before lap only seat belts. Adjust the seat belt so that the lap belt is as low as possible across the hip bones NOT over the stomach.

Ensure that the diagonal strap lies across the chest and away from the neck. It should slope up and back to the top fix point and not be twisted. In some cars, you can adjust the height of the top fitting point to make this easier. Do not leave any slack in the belt. Do NOT try to improve seat belt comfort with padding or cushions or sit on any mats or cushions. If your seat belt is really uncomfortable, ask the vehicle manufacturer if they have a recommended comfort device.

The harness should be worn as tightly as possible without being uncomfortable.

To fasten the harness, insert the metal tongue into the slot in the release buckle until an audible click is heard. To release, push the RED button.

Straps to mounting points should be taut and in a straight line.

It is important that this harness should be worn on all journeys, no matter how short.

Be sure that:

the straps do not come into contact with any sharp objects which could cut or chafe

the webbing;

the webbing of the harness does not become twisted during installation or use.

CARE AND MAINTENANCE

When not in use, the release buckle should be fastened and the straps tightened to remove slack.

The webbing and hardware of the harness may be cleaned by sponging with mild soap and water and allowing to air dry. Never immerse the release buckle or adjusters.

The effectiveness of the harness will be impaired if it is changed or altered in any way. If the harness becomes dis-assembled, it should be returned to the manufacturer for re-assembly.

The harness should be replaced following a severe impact, or when the webbing or hardware is damaged in any way, or it does not function properly.

WARNING - The effectiveness of this harness is directly related to the way in which it is installed, used and maintained. The user assumes that risk. No warranty, expressed or implied, is made as to its ability to protect against serious injury or death. See instructions for correct installation. If in doubt, consult the Manufacturer. Harnesses should be returned to the Manufacturer for inspection once a year and replaced every two years. Harnesses should be replaced following an accident, or when the webbing or hardware is damaged in any way or does not function properly.

TRS Motorsport t/a Certex Lifting Ltd, Unit C1 Harworth Industrial Estate, Bryans Close, Harworth,
Doncaster, DN11 8RY, UK

Email: sales@trs-motorsport.com www.trs-motorsport.com

Registered Office: Unit C1 Harworth Industrial Estate, Bryans Close, Harworth, Doncaster DN11 8RY

Registered in England No. 05304747

3PT LAP & DIAGONAL